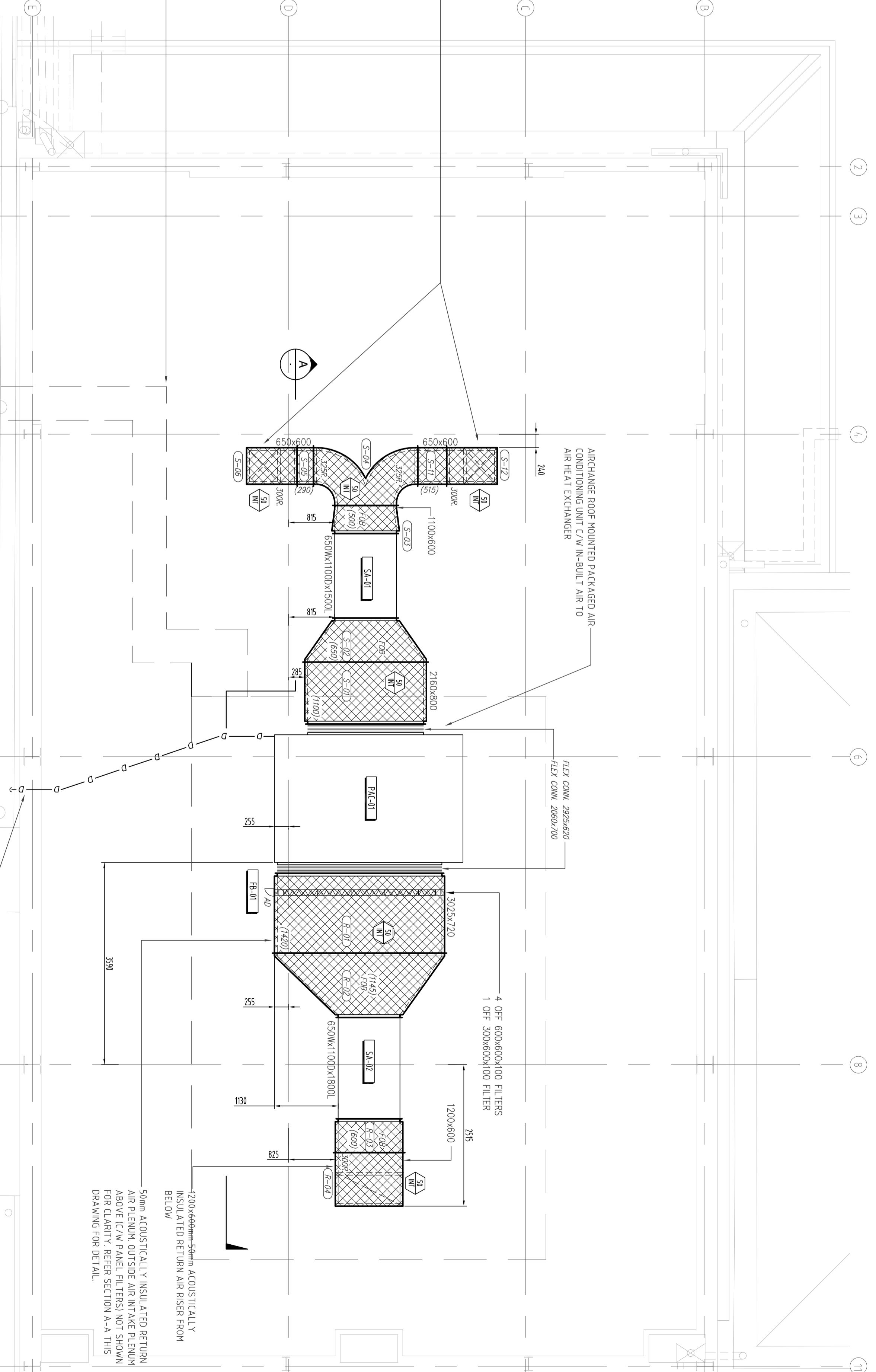


FIRST FLOOR PLAN

ROOF PLAN



REF. NO.	AREA/NO.	TYPE	MAKE	MODEL	FACE AREA (m <sup>2</sup> )	FLEX	CONTROL	NOTES	
S-21	7/5	CT50	915S	ABR DIFFUSION	00-TIV/7/IR-315	480x480	9350	80	P8
S-22	7/5	CT50	915S	ABR DIFFUSION	00-TIV/7/IR-315	480x480	9350	80	P8
S-23	7/5	CT50	915S	ABR DIFFUSION	00-TIV/7/IR-315	480x480	9350	80	P8
S-24	7/5	CT50	915S	ABR DIFFUSION	00-TIV/7/IR-315	480x480	9350	80	P8
S-25	7/5	CT50	915S	ABR DIFFUSION	00-TIV/7/IR-315	480x480	9350	80	P8
S-26	7/5	CT50	915S	ABR DIFFUSION	00-TIV/7/IR-315	480x480	9350	80	P8
S-27	7/5	CT50	915S	ABR DIFFUSION	00-TIV/7/IR-315	480x480	9350	80	P8
S-28	7/5	CT50	915S	ABR DIFFUSION	00-TIV/7/IR-315	480x480	9350	80	P8
S-29	7/5	CT50	915S	ABR DIFFUSION	00-TIV/7/IR-315	480x480	9350	80	P8
S-30	7/5	CT50	915S	ABR DIFFUSION	00-TIV/7/IR-315	480x480	9350	80	P8
S-31	7/5	CT50	915S	ABR DIFFUSION	00-TIV/7/IR-315	480x480	9350	80	P8
S-32	7/5	CT50	915S	ABR DIFFUSION	00-TIV/7/IR-315	480x480	9350	80	P8
S-33	7/5	CT50	915S	ABR DIFFUSION	00-TIV/7/IR-315	480x480	9350	80	P8
S-34	7/5	CT50	915S	ABR DIFFUSION	00-TIV/7/IR-315	480x480	9350	80	P8
S-35	7/5	CT50	915S	ABR DIFFUSION	00-TIV/7/IR-315	480x480	9350	80	P8
S-36	7/5	CT50	915S	ABR DIFFUSION	00-TIV/7/IR-315	480x480	9350	80	P8
S-37	7/5	CT50	915S	ABR DIFFUSION	00-TIV/7/IR-315	480x480	9350	80	P8
S-38	7/5	CT50	915S	ABR DIFFUSION	00-TIV/7/IR-315	480x480	9350	80	P8
S-39	7/5	CT50	915S	ABR DIFFUSION	00-TIV/7/IR-315	480x480	9350	80	P8
S-40	7/5	CT50	915S	ABR DIFFUSION	00-TIV/7/IR-315	480x480	9350	80	P8
S-41	7/5	CT50	915S	ABR DIFFUSION	00-TIV/7/IR-315	480x480	9350	80	P8
S-42	7/5	CT50	915S	ABR DIFFUSION	00-TIV/7/IR-315	480x480	9350	80	P8
S-43	7/5	CT50	915S	ABR DIFFUSION	00-TIV/7/IR-315	480x480	9350	80	P8
S-44	7/5	CT50	915S	ABR DIFFUSION	00-TIV/7/IR-315	480x480	9350	80	P8
S-45	7/5	CT50	915S	ABR DIFFUSION	00-TIV/7/IR-315	480x480	9350	80	P8
S-46	7/5	CT50	915S	ABR DIFFUSION	00-TIV/7/IR-315	480x480	9350	80	P8
S-47	7/5	CT50	915S	ABR DIFFUSION	00-TIV/7/IR-315	480x480	9350	80	P8
S-48	7/5	CT50	915S	ABR DIFFUSION	00-TIV/7/IR-315	480x480	9350	80	P8
S-49	7/5	CT50	915S	ABR DIFFUSION	00-TIV/7/IR-315	480x480	9350	80	P8
S-50	7/5	CT50	915S	ABR DIFFUSION	00-TIV/7/IR-315	480x480	9350	80	P8
S-51	7/5	CT50	915S	ABR DIFFUSION	00-TIV/7/IR-315	480x480	9350	80	P8
S-52	7/5	CT50	915S	ABR DIFFUSION	00-TIV/7/IR-315	480x480	9350	80	P8
S-53	7/5	CT50	915S	ABR DIFFUSION	00-TIV/7/IR-315	480x480	9350	80	P8
S-54	7/5	CT50	915S	ABR DIFFUSION	00-TIV/7/IR-315	480x480	9350	80	P8
S-55	7/5	CT50	915S	ABR DIFFUSION	00-TIV/7/IR-315	480x480	9350	80	P8
S-56	7/5	CT50	915S	ABR DIFFUSION	00-TIV/7/IR-315	480x480	9350	80	P8
S-57	7/5	CT50	915S	ABR DIFFUSION	00-TIV/7/IR-315	480x480	9350	80	P8
S-58	7/5	CT50	915S	ABR DIFFUSION	00-TIV/7/IR-315	480x480	9350	80	P8
S-59	7/5	CT50	915S	ABR DIFFUSION	00-TIV/7/IR-315	480x480	9350	80	P8
S-60	7/5	CT50	915S	ABR DIFFUSION	00-TIV/7/IR-315	480x480	9350	80	P8

REF. NO.	AREA/NO.	TYPE	MAKE	FACE AREA (m <sup>2</sup> )	FLEX	CONTROL	NOTES
R-1	5/9	RA12	---	1200x600	---	080	P8
R-2	5/9	RA12	---	1200x600	---	080	P8
R-3	5/9	RA12	---	1200x600	---	080	P8
R-4	5/9	RA12	---	1200x600	---	080	P8
R-5	5/9	RA12	---	1200x600	---	080	P8
R-6	5/9	RA12	---	1200x600	---	080	P8
R-7	5/9	RA12	---	1200x600	---	080	P8
R-8	5/9	RA12	---	1200x600	---	080	P8
R-9	5/9	RA12	---	1200x600	---	080	P8
R-10	5/9	RA12	---	1200x600	---	080	P8
R-11	5/9	RA12	---	1200x600	---	080	P8
R-12	5/9	RA12	---	1200x600	---	080	P8
R-13	5/9	RA12	---	1200x600	---	080	P8
R-14	5/9	RA12	---	1200x600	---	080	P8
R-15	5/9	RA12	---	1200x600	---	080	P8
R-16	5/9	RA12	---	1200x600	---	080	P8
R-17	5/9	RA12	---	1200x600	---	080	P8
R-18	5/9	RA12	---	1200x600	---	080	P8
R-19	5/9	RA12	---	1200x600	---	080	P8
R-20	5/9	RA12	---	1200x600	---	080	P8

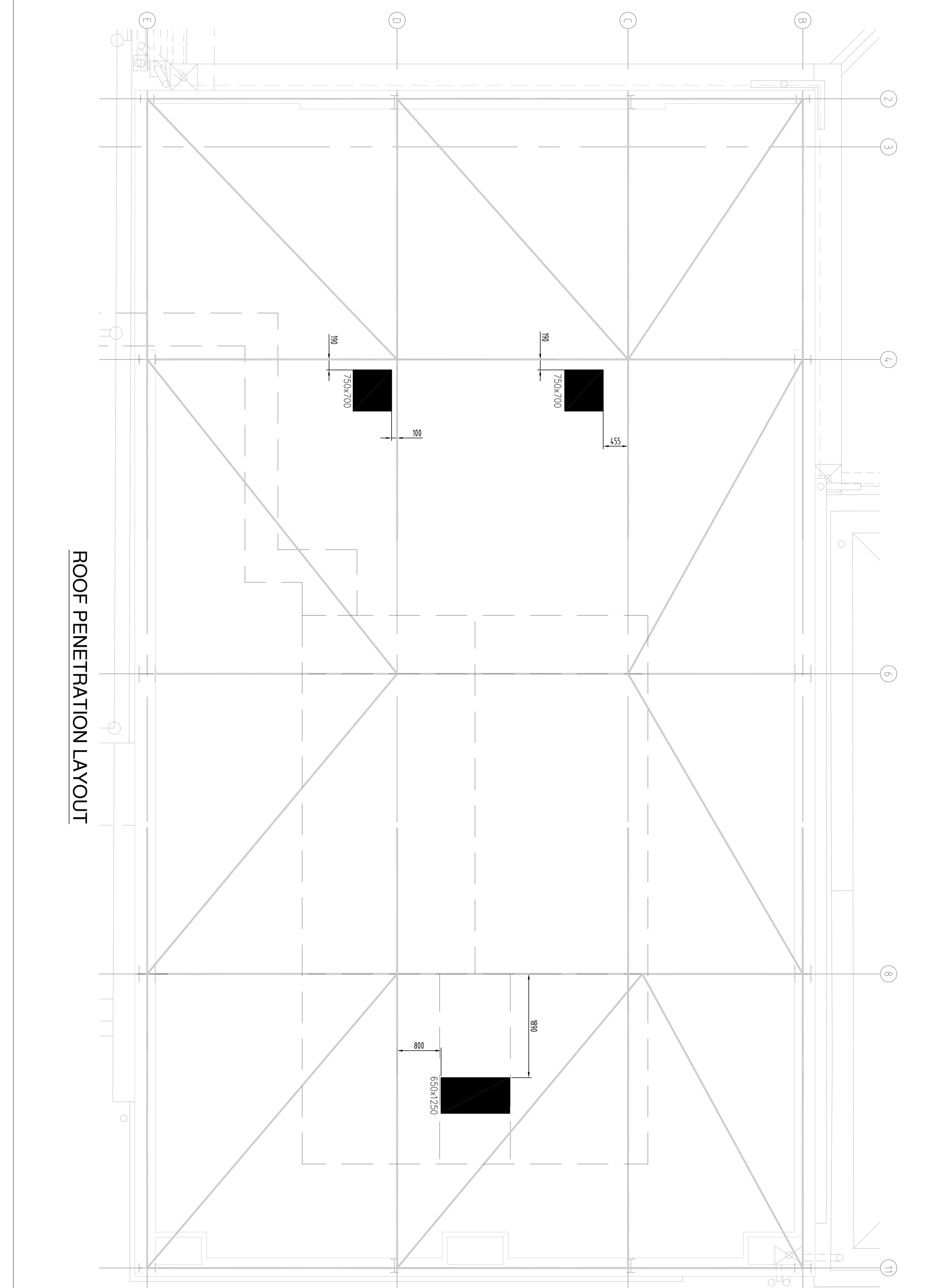
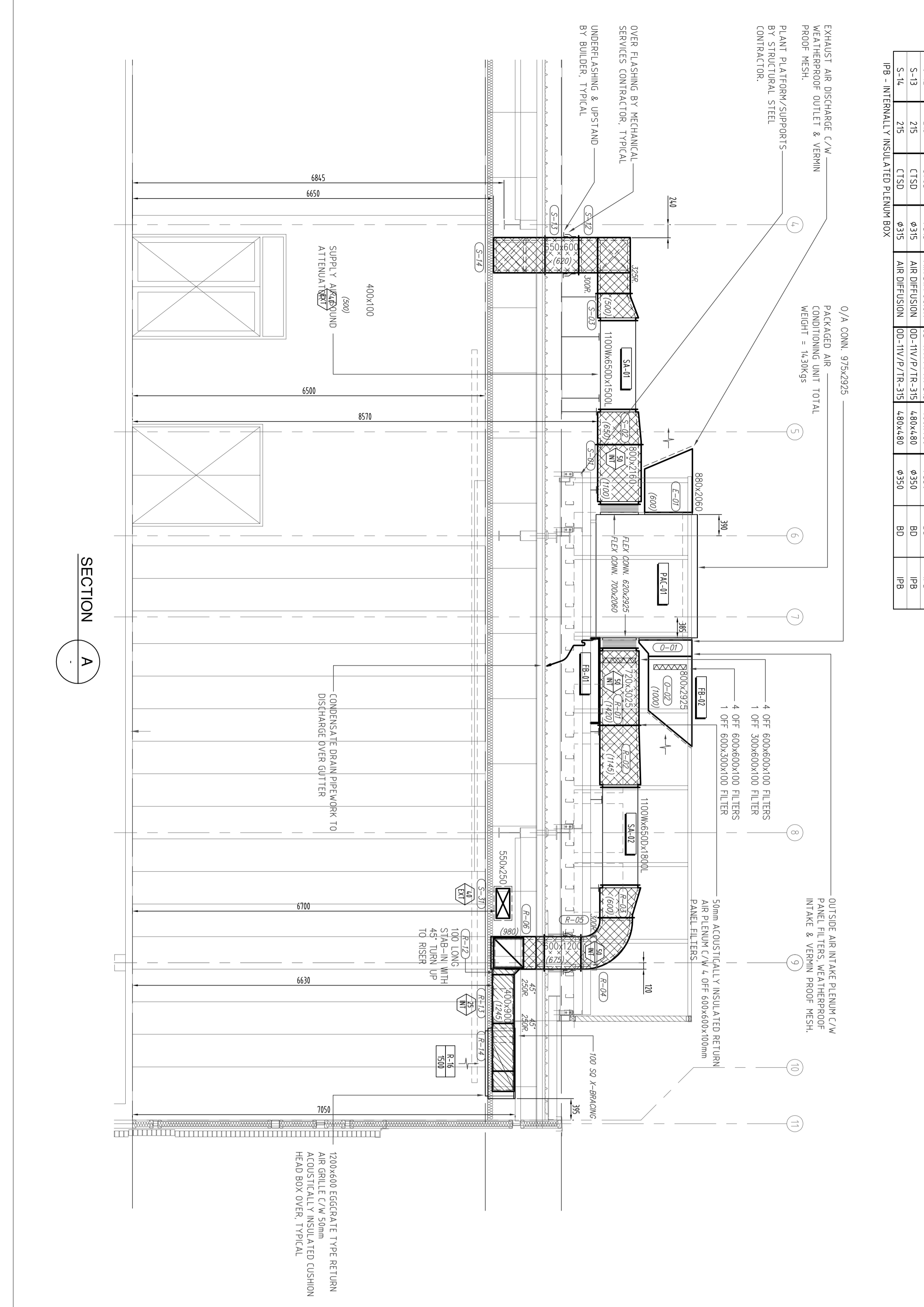
ITEM NO.	MAKE	MODEL	TYPE	DUTY	SIZE (mm)	NO. OF UNITS	AVERAGE EFFICIENCY	FRAME TYPE	FILTER GAUGE
FB-01	---	---	PANEL	3000	600x600x100	1	---	HOLDING FRAME	TYPE 1
FB-02	---	---	PANEL	3000	600x600x100	1	---	HOLDING FRAME	TYPE 1
FB-03	---	---	PANEL	3000	600x600x100	1	---	HOLDING FRAME	TYPE 1

UNIT NO.	MAKE/MODEL	AREA SERVED (m <sup>2</sup> )	AREA/NO.	CAPACITY (kW)	STATIC PRESSURE (Pa)	ELECTRICAL (kVA)
PACK-01	PACKAGED AIR CONDITIONING	3000	PACKED AIR CONDITIONING	35	70	4.8/3.1/2.5

ITEM NO.	MAKE	MODEL	LENGTH (mm)	WIDTH (mm)	HEIGHT (mm)	UNIT WEIGHT (kg)
FA-01	FANATIC	F102-55-10	750	550	100	4.5
FA-02	FANATIC	F102-55-10	750	550	100	4.5
FA-03	FANATIC	F102-55-10	750	550	100	4.5
FA-04	FANATIC	F102-55-10	750	550	100	4.5
FA-05	FANATIC	F102-55-10	750	550	100	4.5
FA-06	FANATIC	F102-55-10	750	550	100	4.5
FA-07	FANATIC	F102-55-10	750	550	100	4.5
FA-08	FANATIC	F102-55-10	750	550	100	4.5
FA-09	FANATIC	F102-55-10	750	550	100	4.5
FA-10	FANATIC	F102-55-10	750	550	100	4.5
FA-11	FANATIC	F102-55-10	750	550	100	4.5
FA-12	FANATIC	F102-55-10	750	550	100	4.5
FA-13	FANATIC	F102-55-10	750	550	100	4.5
FA-14	FANATIC	F102-55-10	750	550	100	4.5
FA-15	FANATIC	F102-55-10	750	550	100	4.5
FA-16	FANATIC	F102-55-10	750	550	100	4.5
FA-17	FANATIC	F102-55-10	750	550	100	4.5
FA-18	FANATIC	F102-55-10	750	550	100	4.5
FA-19	FANATIC	F102-55-10	750	550	100	4.5
FA-20	FANATIC	F102-55-10	750	550	100	4.5

REF. NO.	AREA/NO.	TYPE	MAKE	MODEL	FACE AREA (m <sup>2</sup> )	FLEX	CONTROL	NOTES
PK-1	5/9	PACKAGED AIR CONDITIONING UNIT	---	---	3000	---	080	P8
PK-2	5/9	PACKAGED AIR CONDITIONING UNIT	---	---	3000	---	080	P8
PK-3	5/9	PACKAGED AIR CONDITIONING UNIT	---	---	3000	---	080	P8
PK-4	5/9	PACKAGED AIR CONDITIONING UNIT	---	---	3000	---	080	P8
PK-5	5/9	PACKAGED AIR CONDITIONING UNIT	---	---	3000	---	080	P8
PK-6	5/9	PACKAGED AIR CONDITIONING UNIT	---	---	3000	---	080	P8
PK-7	5/9	PACKAGED AIR CONDITIONING UNIT	---	---	3000	---	080	P8
PK-8	5/9	PACKAGED AIR CONDITIONING UNIT	---	---	3000	---	080	P8
PK-9	5/9	PACKAGED AIR CONDITIONING UNIT	---	---	3000	---	080	P8
PK-10	5/9	PACKAGED AIR CONDITIONING UNIT	---	---	3000	---	080	P8
PK-11	5/9	PACKAGED AIR CONDITIONING UNIT	---	---	3000	---	080	P8
PK-12	5/9	PACKAGED AIR CONDITIONING UNIT	---	---	3000	---	080	P8
PK-13	5/9	PACKAGED AIR CONDITIONING UNIT	---	---	3000	---	080	P8
PK-14	5/9	PACKAGED AIR CONDITIONING UNIT	---	---	3000	---	080	P8
PK-15	5/9	PACKAGED AIR CONDITIONING UNIT	---	---	3000	---	080	P8
PK-16	5/9	PACKAGED AIR CONDITIONING UNIT	---	---	3000	---	080	P8
PK-17	5/9	PACKAGED AIR CONDITIONING UNIT	---	---	3000	---	080	P8
PK-18	5/9	PACKAGED AIR CONDITIONING UNIT	---	---	3000	---	080	P8
PK-19	5/9	PACKAGED AIR CONDITIONING UNIT	---	---	3000	---	080	P8
PK-20	5/9	PACKAGED AIR CONDITIONING UNIT	---	---	3000	---	080	P8

GENERAL NOTES  
1. ALL DUCT HEIGHTS TAKEN FROM FLOOR 1.000M A.L. 4.914M



**LEGEND**

- FLEXIBLE DUCT
- DIRECTION OF AIR FLOW
- CONTROL PANEL
- THERMOSTAT
- CIRCULAR THERMAL SWING DIFFUSER
- RETURN AIR GRILLE
- DUCT FITTER NUMBER
- 200mm EXTERNALLY INSULATED DUCTWORK
- 50mm INTERNALLY INSULATED DUCTWORK
- UNSULATED DUCTWORK (BARE)

**PAUL CAMPBELL ARCHITECTS**

**FIRST DEGREE Commercial Refrigeration & Airconditioning**

1245r7 Blvd, Adelaide, South Australia, 5007  
T: +61 8 834 6139 | F: +61 8 834 6138 | M: +61 411 019 9365 | W: www.firstdegree.com.au

**ST ALOYSIUS COLLEGE - STAGE 2A - MULTIPURPOSE, 53 WAKEFIELD STREET, ADELAIDE SA 5000**

Project: ST ALOYSIUS COLLEGE - STAGE 2A - MULTIPURPOSE, 53 WAKEFIELD STREET, ADELAIDE SA 5000

Date: 15.02.10  
Scale: 1:50 @ A0

Drawing No: KSG-14019-001

Drawing Title: FIRST FLOOR & ROOF AIRCONDITIONING ARRANGEMENT

Drawing By: AB

Drawing Date: 15.02.10

Approved: KSG

Checked: KSG

Drawn: KSG

Issue: 01

Issued For: CONSTRUCTION